

FOR LEASE SWARTZ CROSSING

State Road 135 + Stones Crossing Rd | Greenwood, IN 46143



PROPERTY SUMMARY

- + Prime Outlots for Ground Lease or Build to Suit
- + Located at the SEC of State Rd 135 & Stones Crossing Rd, between two major health complexes (100,000 SF Franciscan Health & 70,000 SF Community Health Network).
- + Rapid Growth in the Greenwood/Bargersville/Center Grove area, with 4,000+ new homes and 292-Unit CRG "Flats at Stones Crossing" nearby.
- + Population of 50,000+ and average household income of \$140K+ within 3 miles
- + Prime access via SR 135 stoplight and secondary access from Stones Crossing Rd.
- + Nearby former Marsh Supermarkets to be revitalized with family-friendly entertainment.
- + Built-in customer base with onsite apartments, walking path along SR 135, and a planned 250 apartments & 325 single-family rental homes development, and the planned 245 Acre, 380-home Lennar development to the south

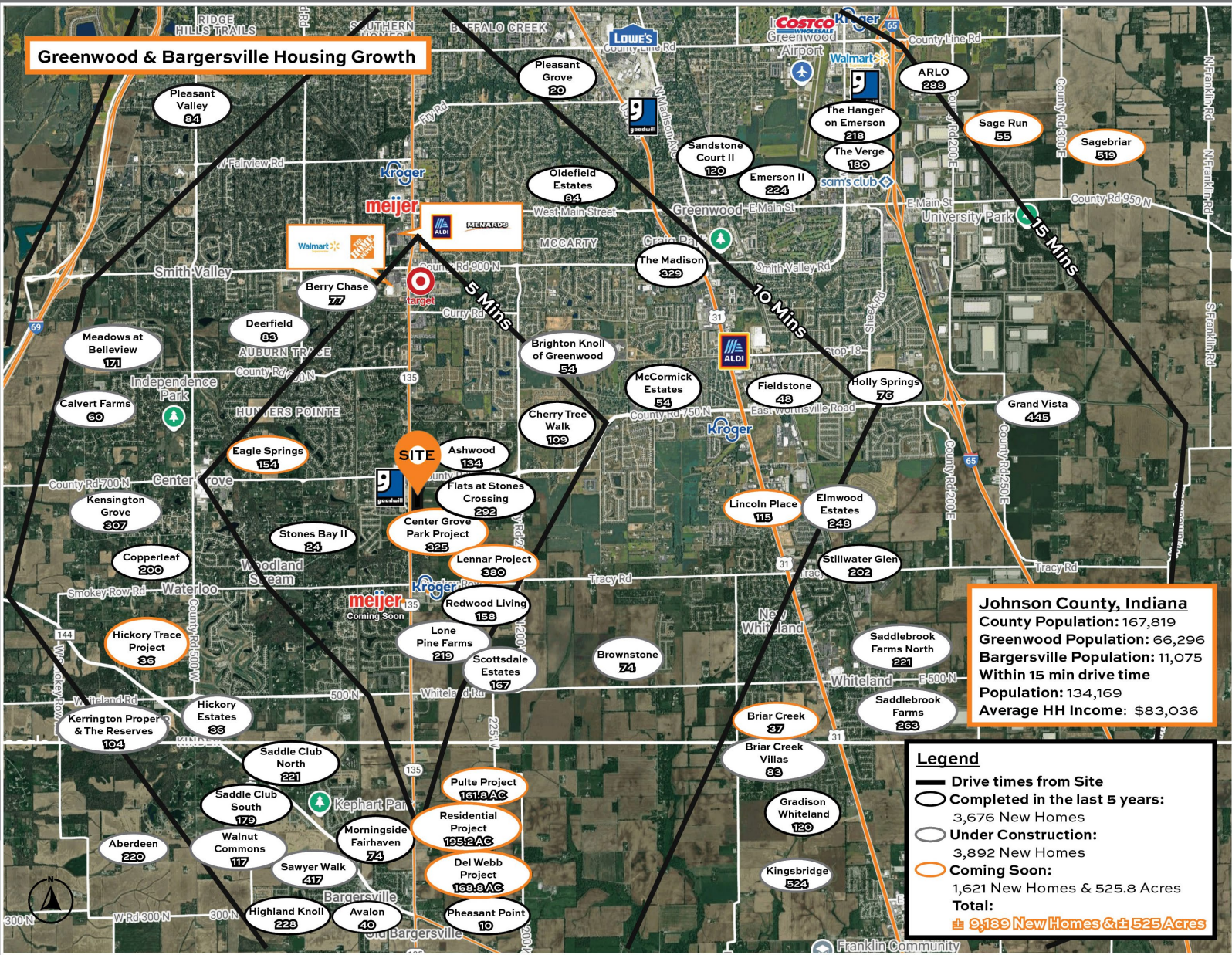
Kevin Jones
Leasing Agent
317.702.7199
kevin@theCREpros.com

metaCRE

Tim Jordan
Broker
317.509.4513
tjordan@thomasenglish.com

FOR LEASE SWARTZ CROSSING

State Road 135 + Stones Crossing Rd | Greenwood, IN 46143



DEMOGRAPHICS

	1 Mile	3 Mile	5 Mile	10 Mile
Est. Population	4,311	50,430	124,466	334,337
Est. Average HH Income	\$132,667	\$144,301	\$121,308	\$108,920
Est. Households	1,720	18,074	48,025	129,736
Daytime Population	505	8,514	29,159	88,459

Information deemed reliable, but not guaranteed. Subject to change without notice.

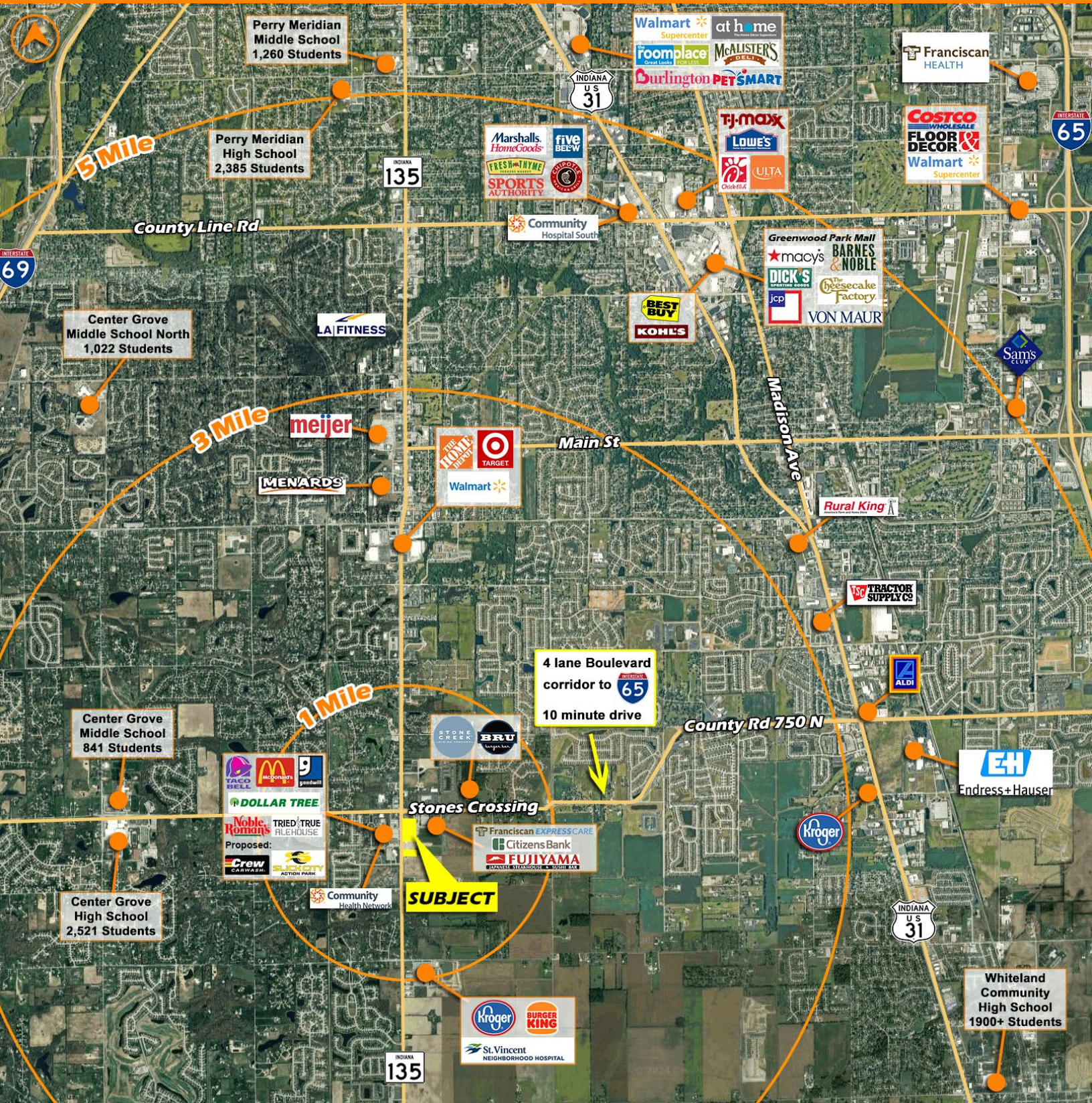
Thomas English
Retail Real Estate

metaCRE

Owner | Developer

FOR LEASE SWARTZ CROSSING

State Road 135 + Stones Crossing Rd | Greenwood, IN 46143



Information deemed reliable, but not guaranteed. Subject to change without notice.

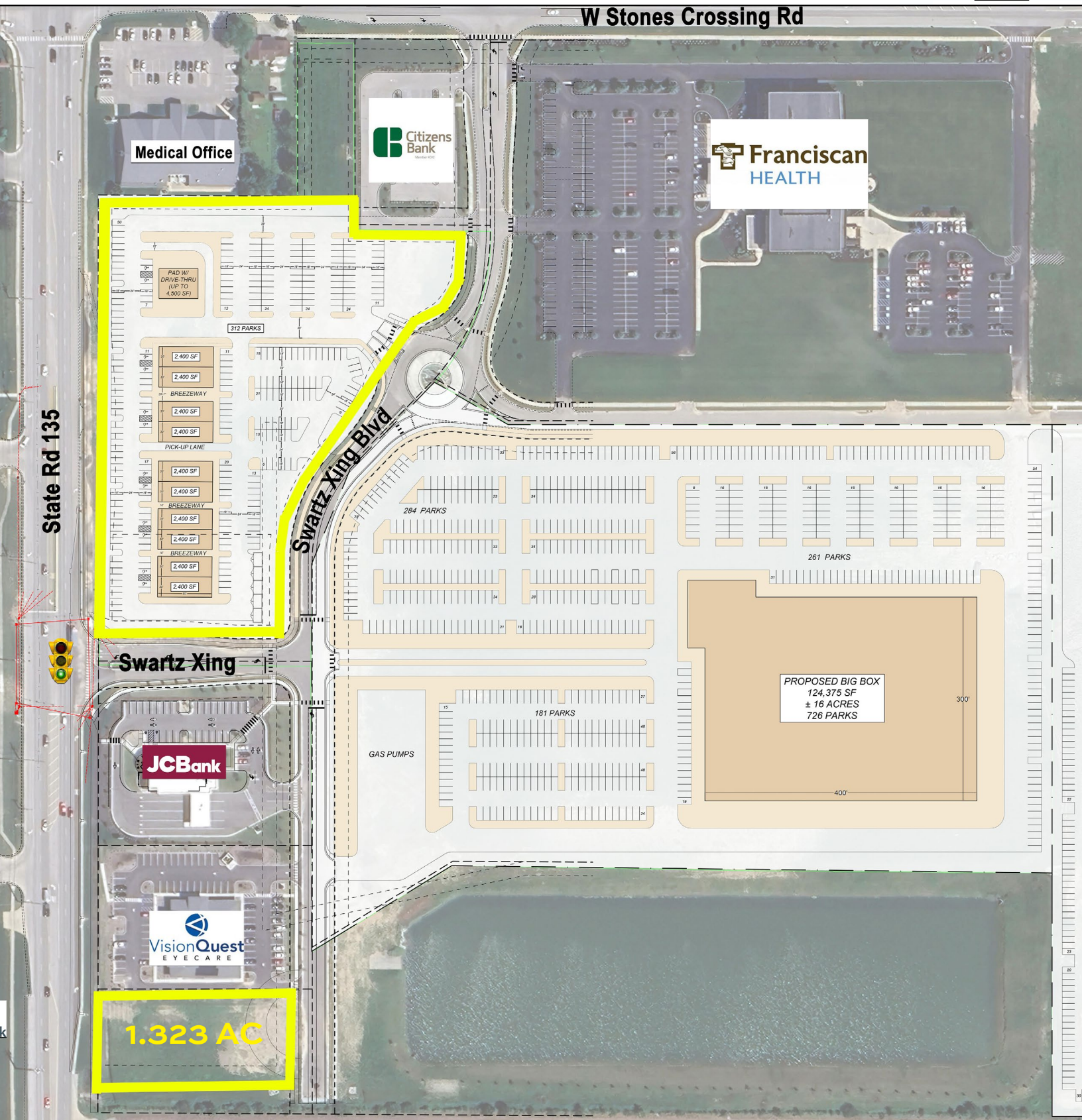
Thomas English
Retail Real Estate

metaCRE

Owner | Developer

FOR LEASE SWARTZ CROSSING

State Road 135 + Stones Crossing Rd | Greenwood, IN 46143



Information deemed reliable, but not guaranteed. Subject to change without notice.

Thomas English

Retail Real Estate

Owner | Developer

metaCRE

6500 Westfield Blvd
Indianapolis, IN 46220
www.theCREpros.com