

FOR LEASE

SWARTZ CROSSING

State Road 135 + Stones Crossing Rd | Greenwood, IN 46143

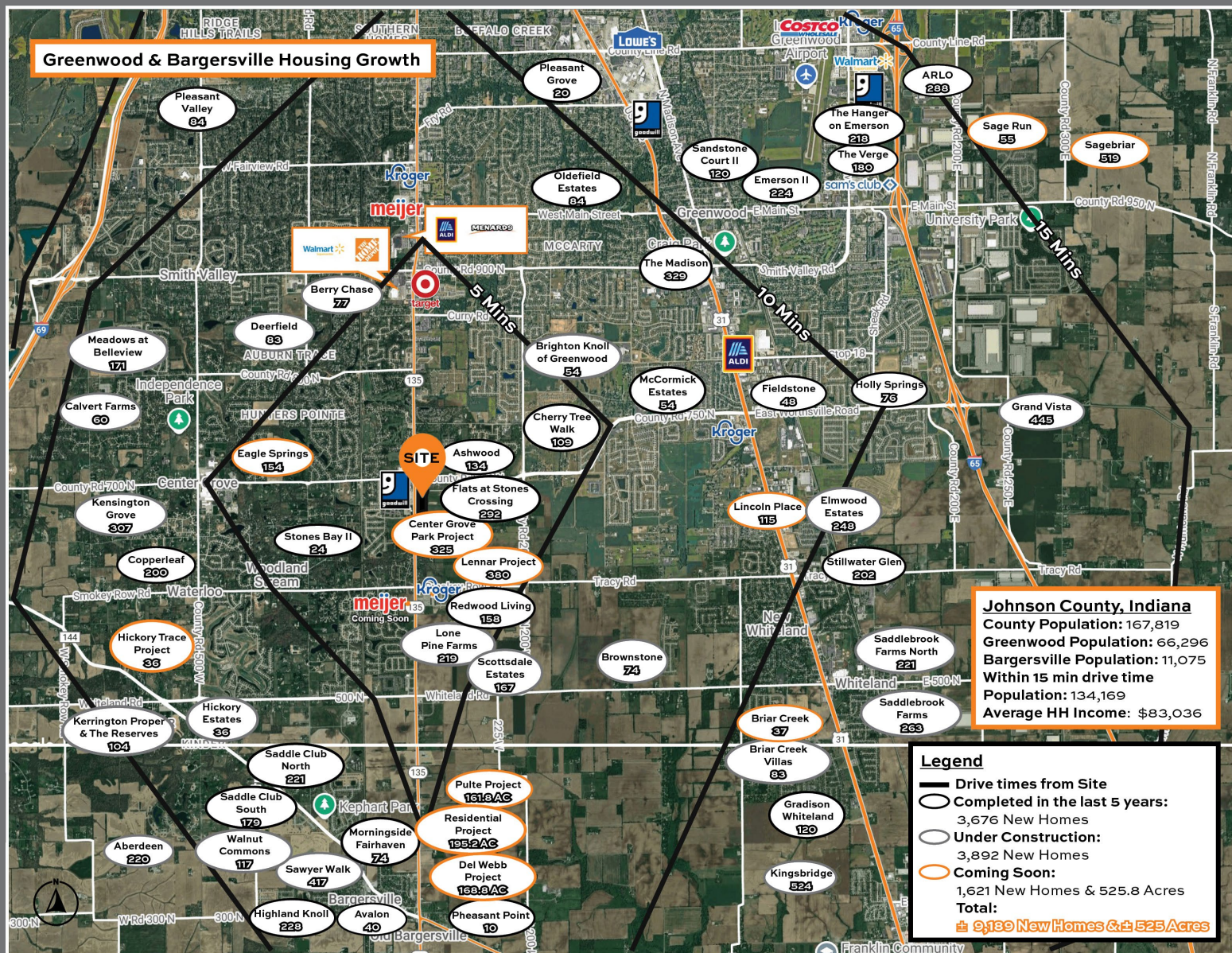


- + High-End Retail Strip Center Coming Soon at SR 135 & Stones Crossing in the heart of Center Grove!
- + Stone Creek & Bru Burger opening late 2025
- + Family-friendly entertainment replacing former Marsh across the street
- + National car wash brand coming to the corner
- + Tried & True Alehouse earns \$8M+ annually - top in 5-mile radius
- + 50K+ population & \$140k+ avg. income within 3 miles
- + Between Franciscan (100K SF) & Community Health Network (70K SF) campuses
- + Built-in customer base: onsite & planned apartments + 380-home Lennar community nearby
- + New Meijer announced close by
- + Kroger at Smokey Row ranks in the top 80% nationally

FOR LEASE

SWARTZ CROSSING

State Road 135 + Stones Crossing Rd | Greenwood, IN 46143



DEMOGRAPHICS

	1 Mile	3 Mile	5 Mile	10 Mile
Est. Population	4,311	50,430	124,466	334,337
Est. Average HH Income	\$132,667	\$144,301	\$121,308	\$108,920
Est. Households	1,720	18,074	48,025	129,736
Daytime Population	505	8,514	29,159	88,459

Information deemed reliable, but not guaranteed. Subject to change without notice.

Thomas English

Retail Real Estate

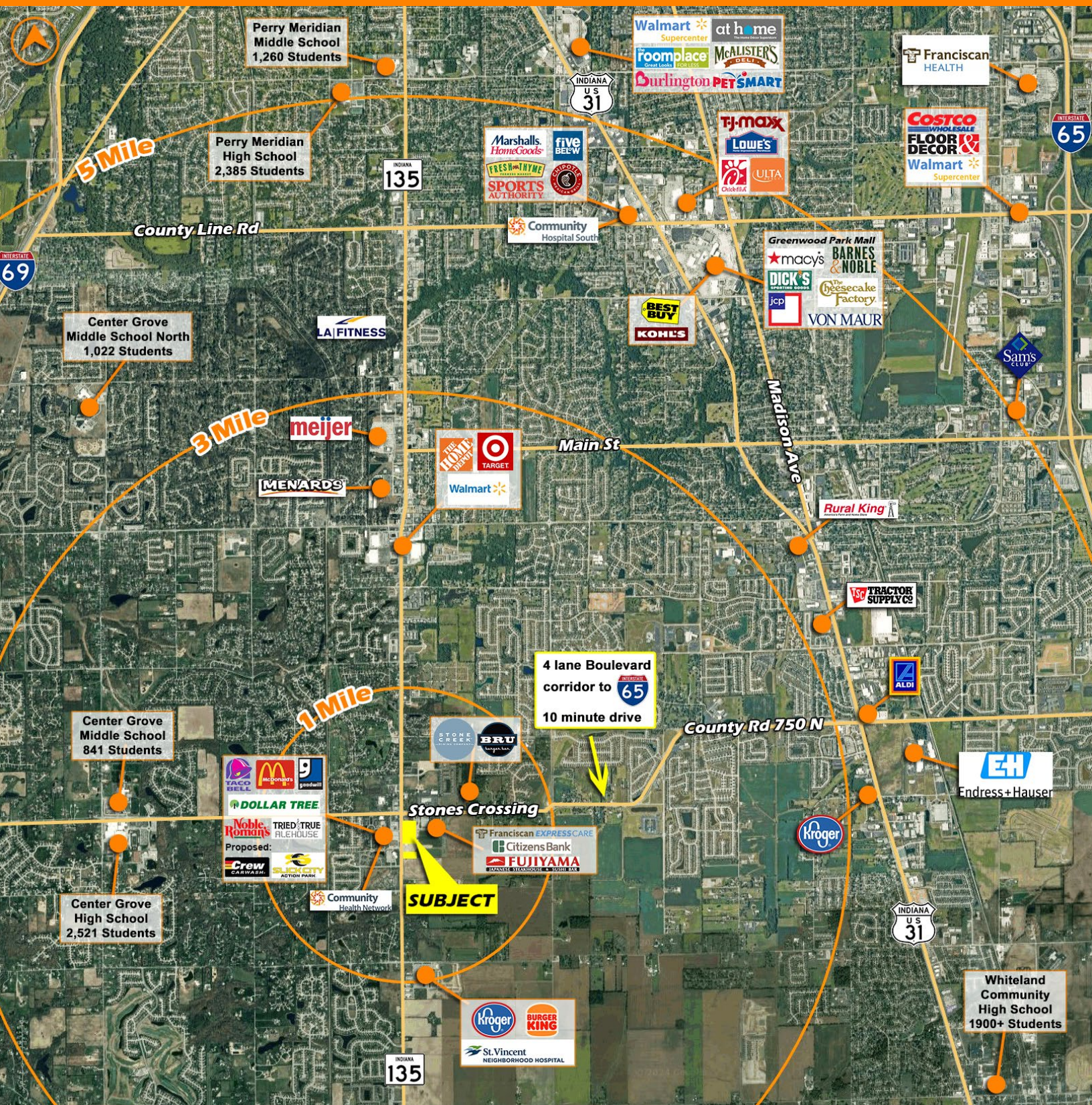
Owner | Developer

metaCRE

FOR LEASE

SWARTZ CROSSING

State Road 135 + Stones Crossing Rd | Greenwood, IN 46143



Information deemed reliable, but not guaranteed. Subject to change without notice.

Thomas English

Retail Real Estate

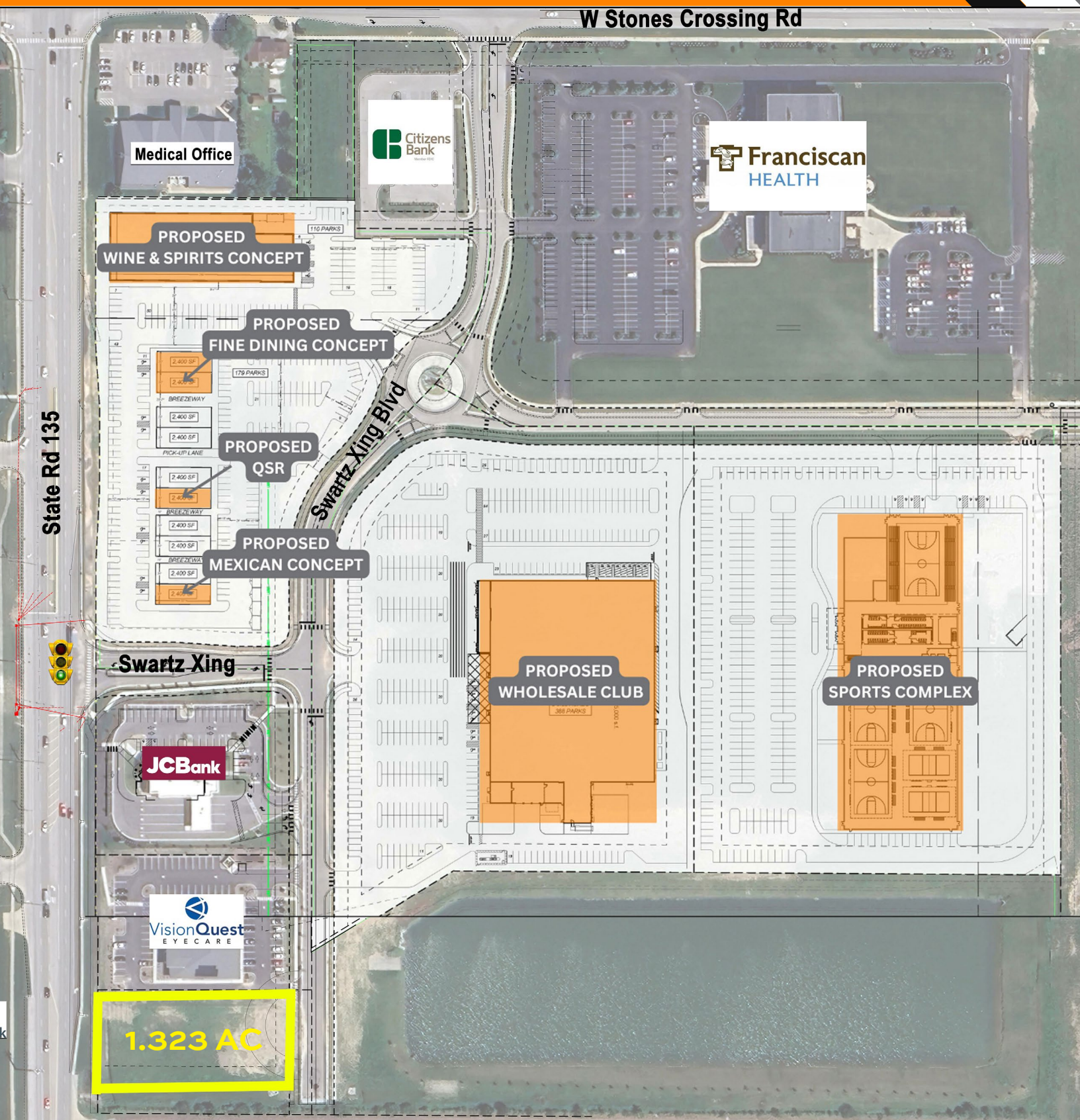
Owner | Developer

metaCRE

FOR LEASE

SWARTZ CROSSING

State Road 135 + Stones Crossing Rd | Greenwood, IN 46143



Information deemed reliable, but not guaranteed. Subject to change without notice.

Thomas English

Retail Real Estate

Owner | Developer

metaCRE

6500 Westfield Blvd
Indianapolis, IN 46220
www.theCREpros.com